

The Lydick Corridor

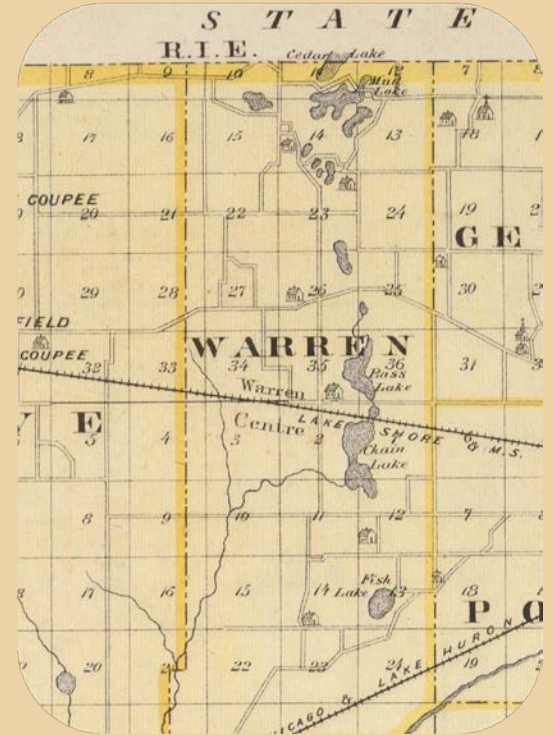
How Preserving
Ecosystems Grows a
Sustainable Future

Scott Namestnik

Steve Sass



Indiana Native Plant
& Wildflower Society



Indiana University - South Bend
Sustainability and Innovation Lecture Series 2017
January 25, 2017

The Lydick Corridor

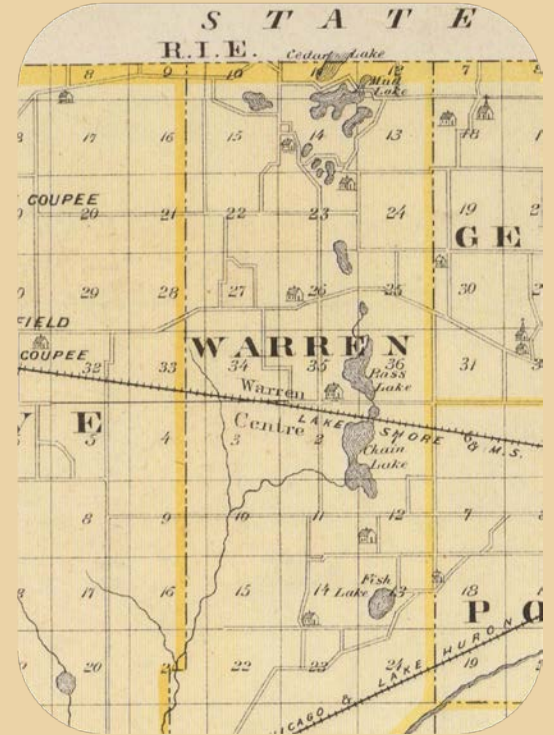
How Preserving
Ecosystems Grows a
Sustainable Future

Scott Namestnik

Steve Sass

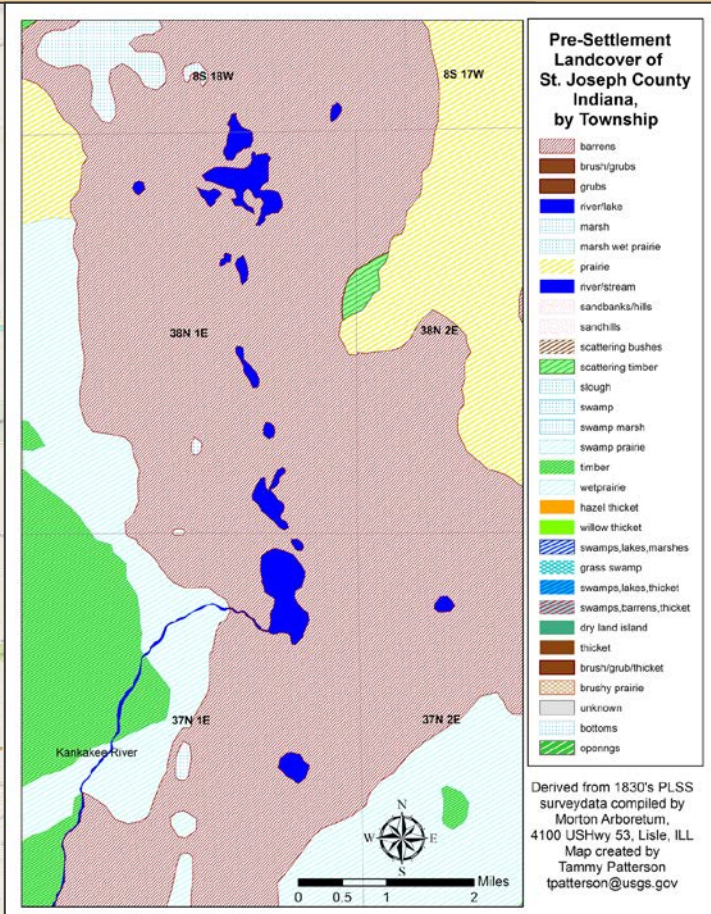
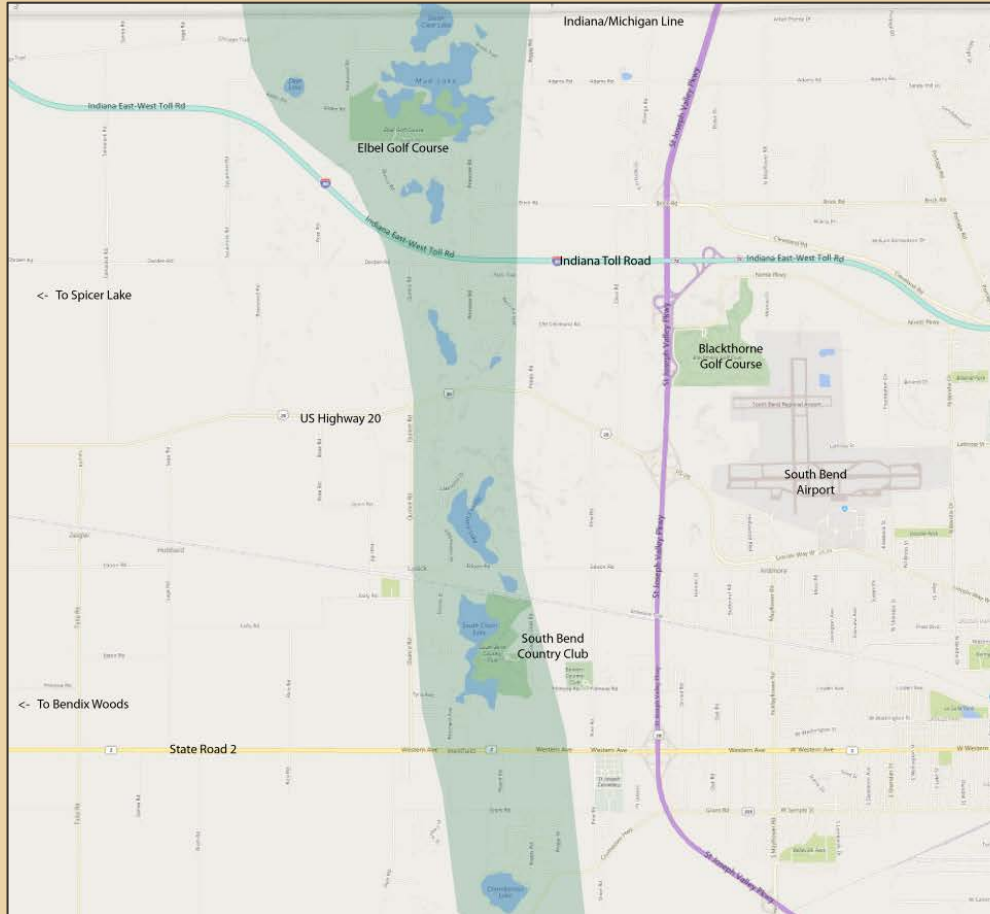


Indiana Native Plant
& Wildflower Society



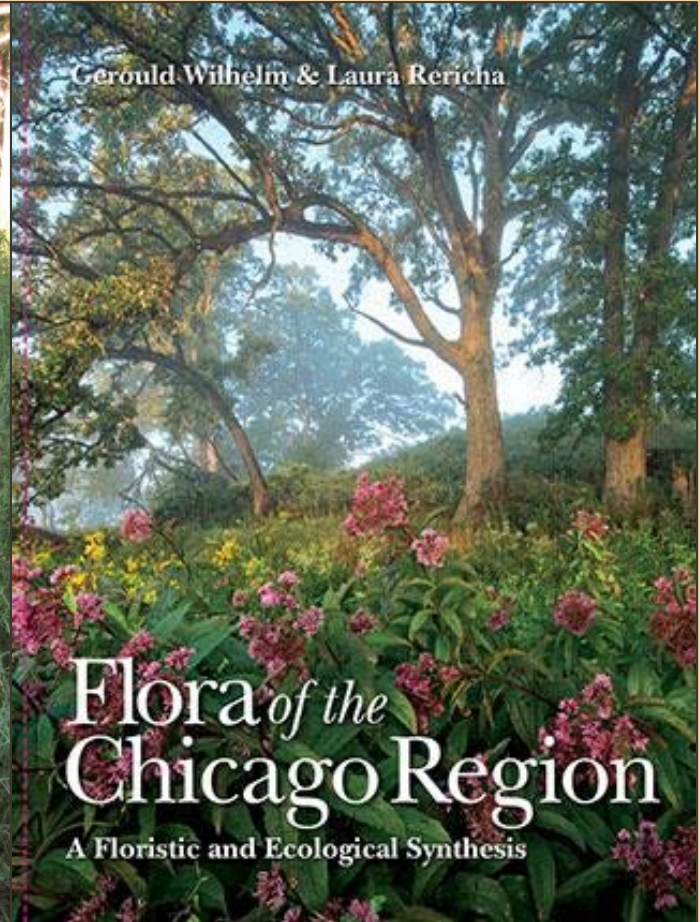
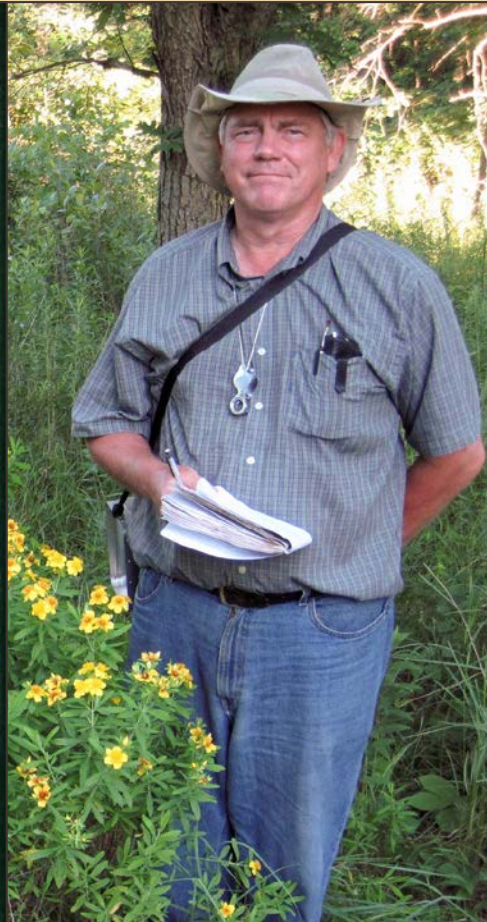
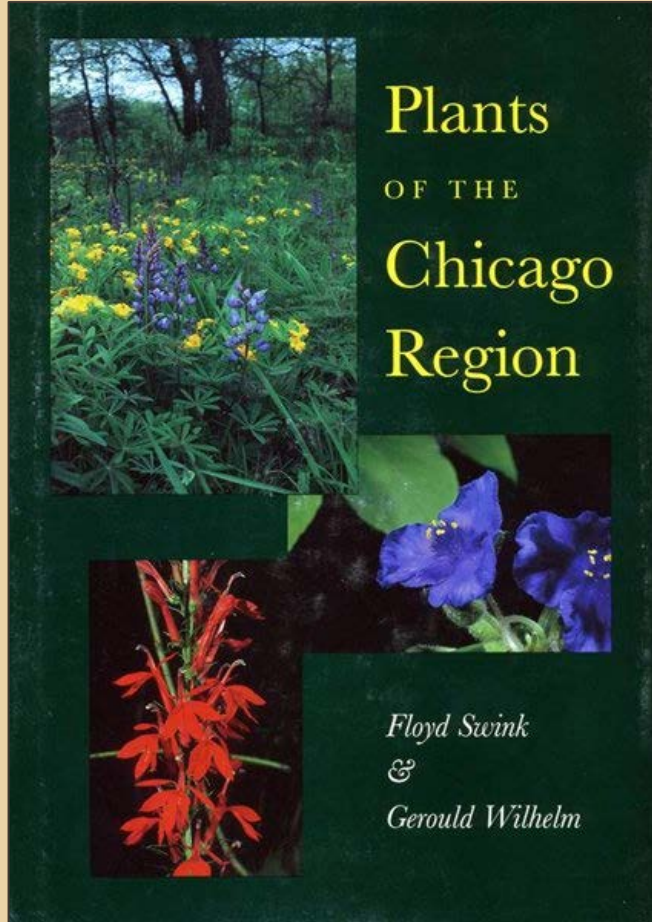
Indiana University - South Bend
Sustainability and Innovation Lecture Series 2017
January 25, 2017

The Lydick Corridor

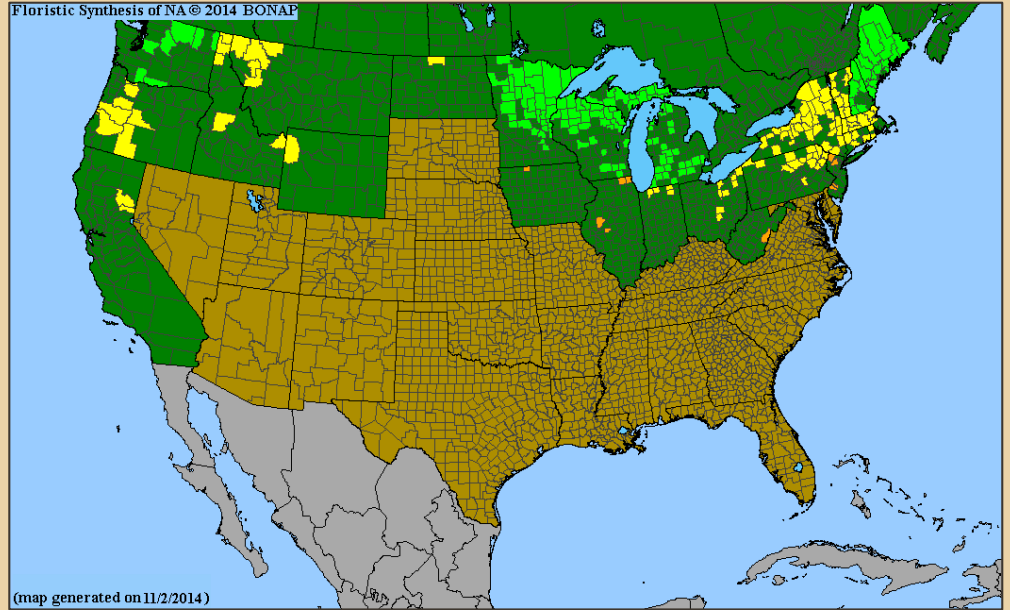


Finding a Bog

Winter/Spring 2014



The Impetus



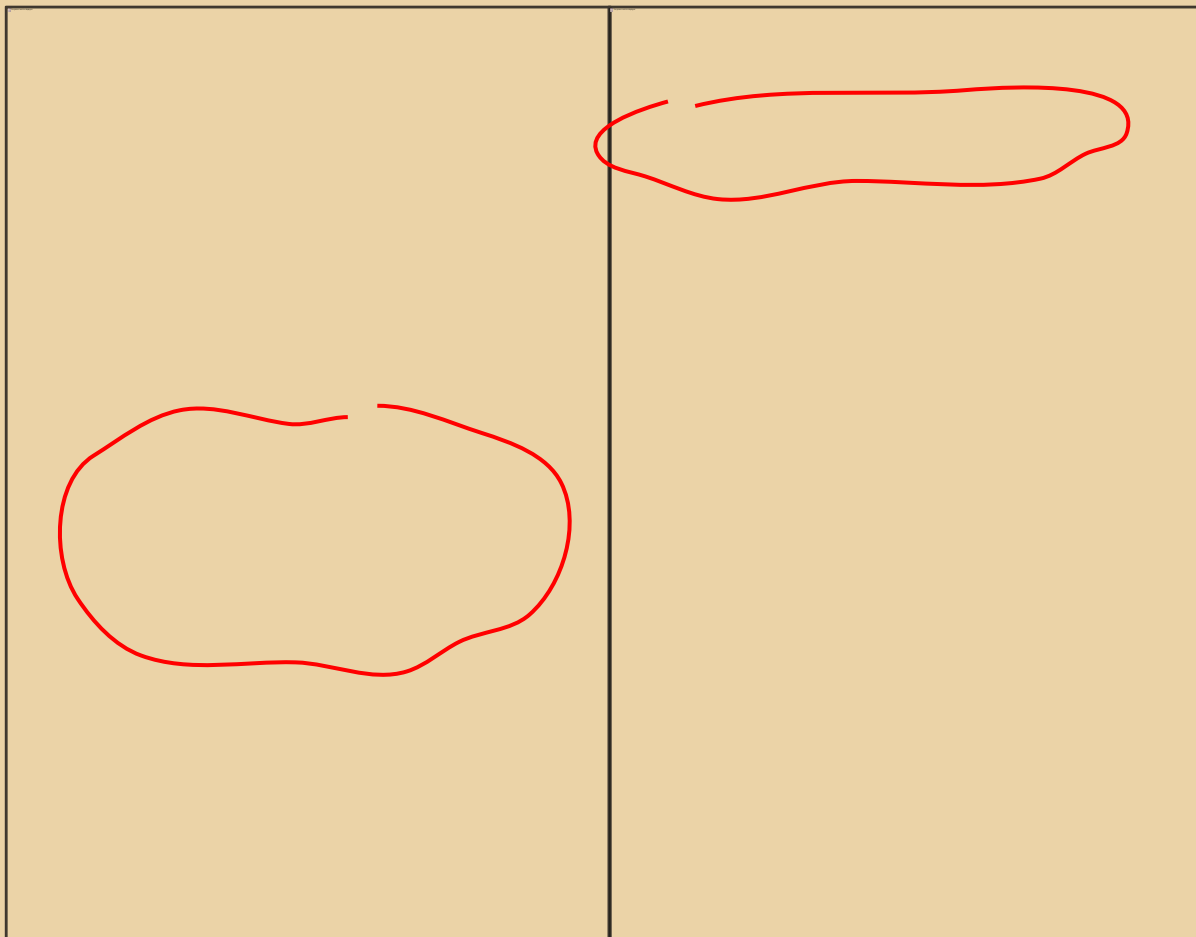
Rannoch Rush (*Scheuchzeria palustris*), Indiana Endangered

Distribution map from: Kartesz, J.T., The Biota of North America Program (BONAP). 2015. *North American Plant Atlas*. (<http://bonap.net/napa>). Chapel Hill, N.C. [maps generated from Kartesz, J.T. 2015. Floristic Synthesis of North America, Version 1.0. Biota of North America Program (BONAP). (in press)].

The Impetus



The Impetus



The Impetus

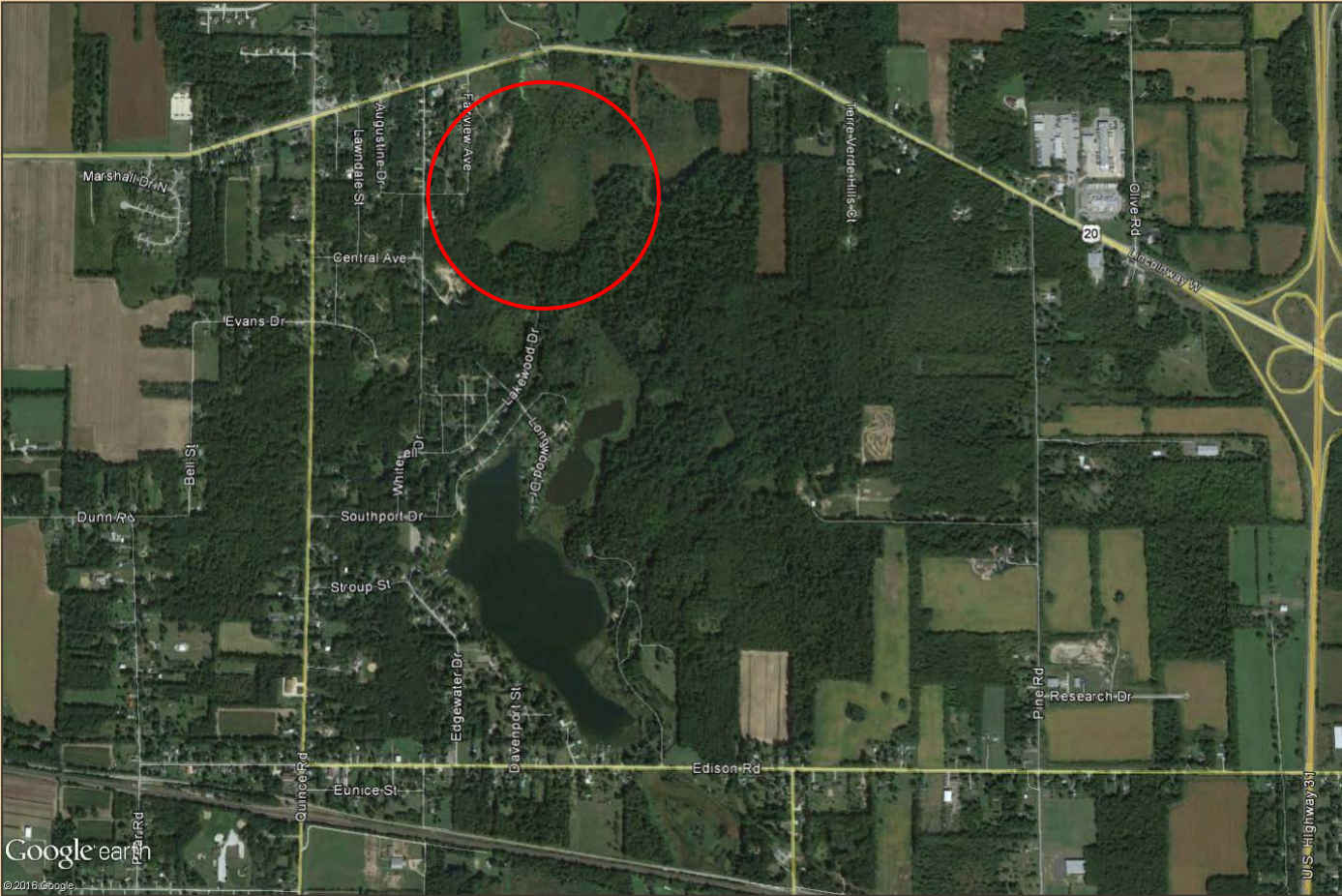
SCHEUCHZERIA Linn. Syst. (1735) Gen. Pl. p. 106, (1737) p. 157, (1754), Sp. Pl. p. 338, (1753).

Scheuchzeria palustris Am. Acad. II, p. 245, (1749), Linn. Sp. Pl. p. 338, (1753).

(Marshall Co.) Hessler, Lake Maxinkuckee, H. W. Clarke; Millers, Ind., Bastin; Chain Lakes, Ind. (St. Joseph Co.), I have found it in open spaces in tamarack bogs commonly throughout the region, associated with *Sarracenia purpurea*, *Oxycoccus macrocarpus* or *Drosera rotundifolia*, *Menyanthes trifoliatus* (Buckbean). Other places where I have seen it without collecting it are; Bankson

Lake (3 miles east) Dune Park, Lakeville, North Liberty, Tamarack (Laporte Co).

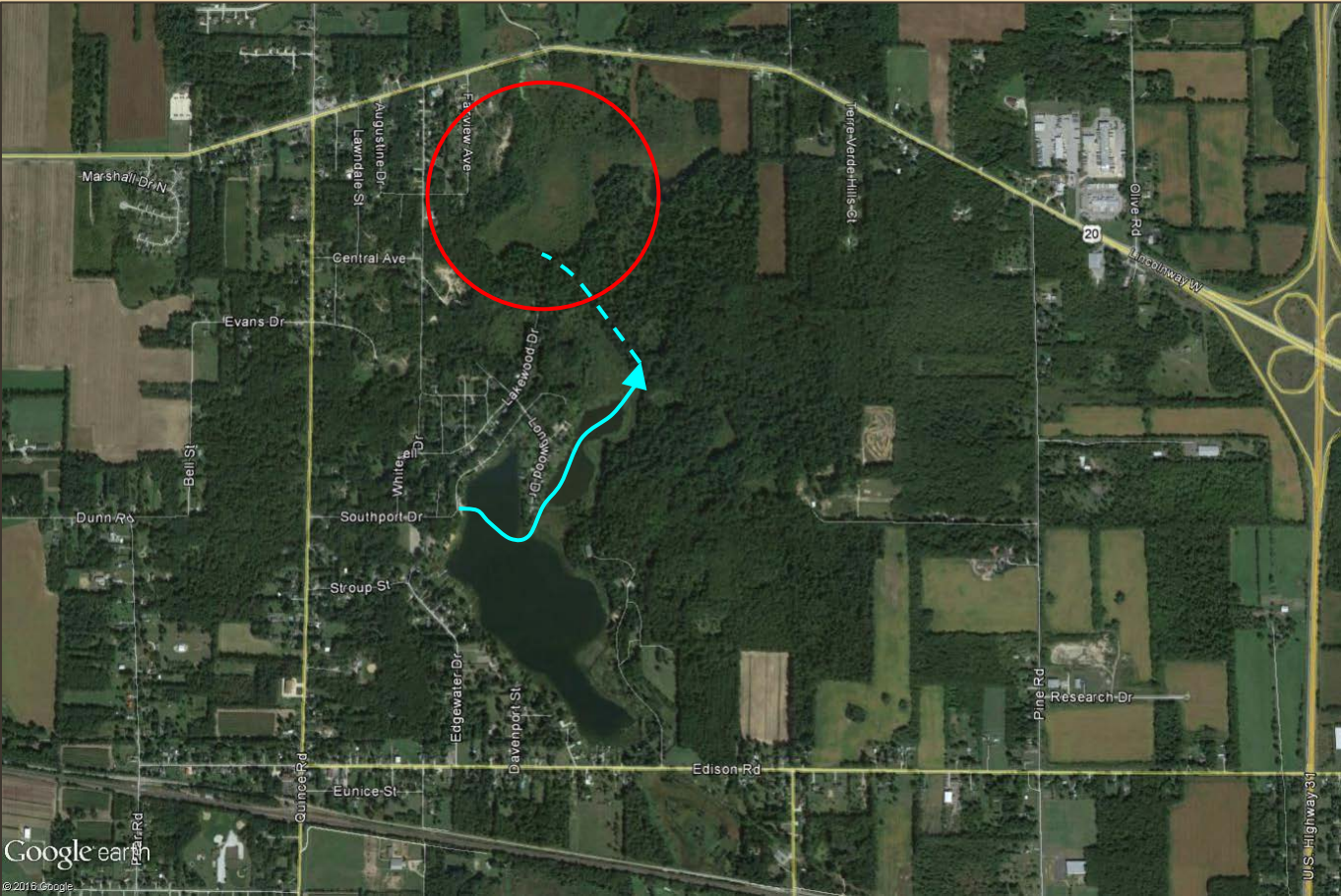
Bog Hunting



Bog Hunting



Bog Hunting

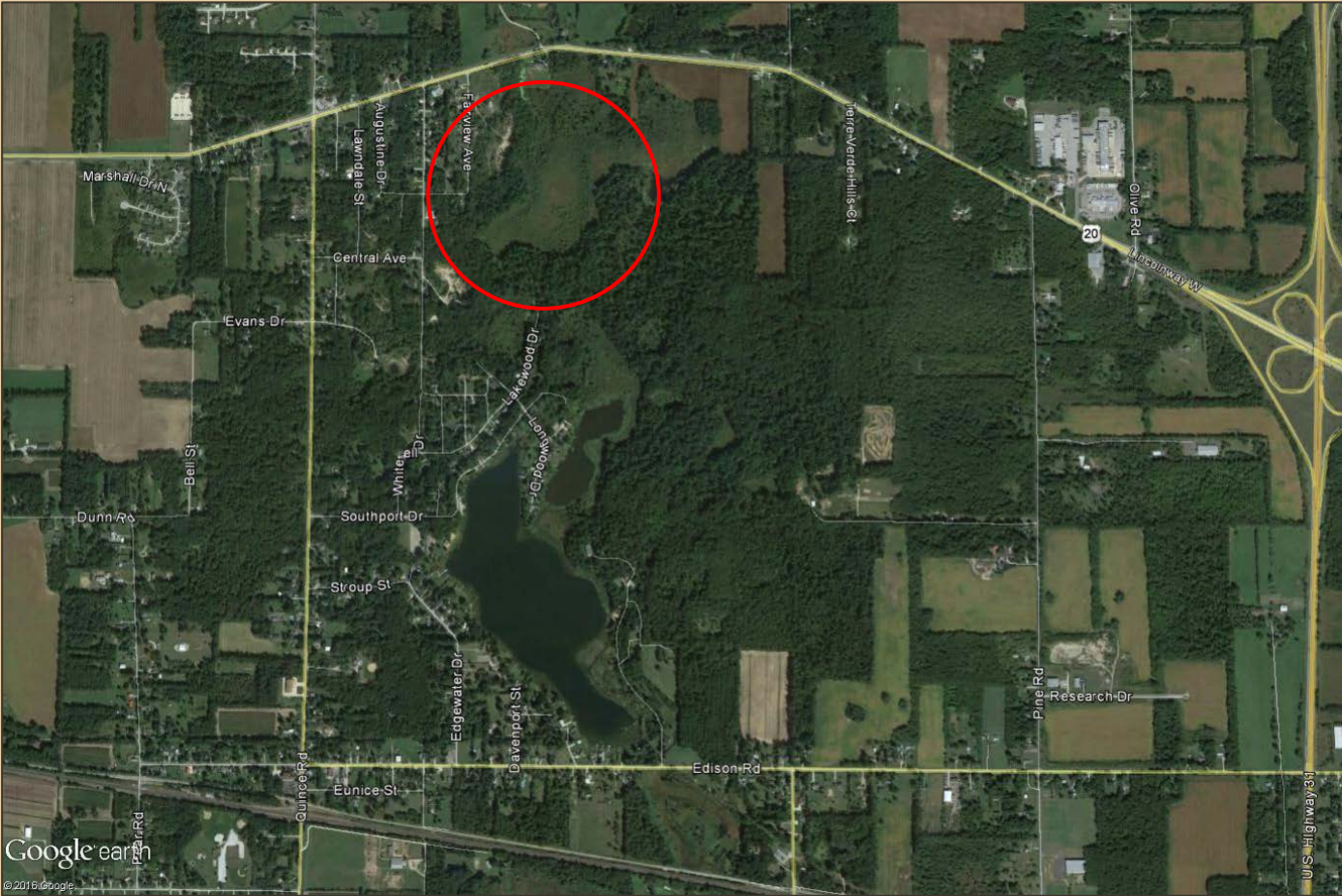


Bog Hunting

6-14-2014



Bog Hunting



Bog Hunting



Bog Hunting



Yep, It's a Bog!

8-18-2014



The Ecology of Lydick Bog



The Ecology of Lydick Bog

Acid sedge and *Sphagnum* bog

Characteristic species: yellow lake sedge (*Carex utriculata*), round-leaved sundew (*Drosera rotundifolia*), sphagnum (*Sphagnum* spp.), poison sumac (*Toxicodendron vernix*)

Several carnivorous plants



The Ecology of Lydick Bog

Informal plant inventory
8/18/2014 and 7/27/2015
(Dunbar, Hedge, Namestnik, and
Sass):

85 species, 81 (95%) native

Mean C = 6.6 (native mean C
= 6.9)

FQI = 60.8 (native FQI =
62.1)



Purple pitcherplant (*Sarracenia purpurea*)



The Ecology of Lydick Bog

ETR Plant Species (7 or 8 documented)

Latin Name	Common Name	ETR Status
<i>Betula populifolia</i>	Gray birch	State Endangered
<i>Carex atlantica</i>	Atlantic star sedge	State Threatened
<i>Dendrolycopodium hickeyi</i>	Hickey's ground pine	State Rare
<i>Malaxis unifolia</i>	Green adder's mouth	State Endangered
<i>Pyrola chlorantha</i>	Green shinleaf	State Extirpated
<i>Salix serissima</i>	Autumn willow	State Threatened
<i>Scheuchzeria palustris</i>	Rannoch rush	State Endangered
<i>Viola primulifolia</i>	Primrose violet	State Threatened



Green adder's mouth (*Malaxis unifolia*)

The Ecology of Lydick Bog

Carnivorous Plant Species

Latin Name	Common Name
<i>Drosera rotundifolia</i>	Round-leaved sundew
<i>Sarracenia purpurea</i>	Purple pitcherplant
<i>Utricularia macrorhiza</i>	Great bladderwort



Round-leaved sundew
(*Drosera rotundifolia*)



Great bladderwort
(*Utricularia macrorhiza*)



The Ecology of Lydick Bog

Other Conservative Plant Species (too many to list!)

Latin Name	Common Name
<i>Bartonia virginica</i>	Virginia screwstem
<i>Bidens discoidea</i>	Swamp beggarticks
<i>Carex alata</i>	Winged oval sedge
<i>Carex canescens</i>	Bog gray sedge
<i>Chamaedaphne calyculata</i> var. <i>angustifolia</i>	Leatherleaf
<i>Comarum palustre</i>	Marsh cinquefoil
<i>Dulichium arundinaceum</i>	Three-way sedge
<i>Larix laricina</i>	Tamarack



Virginia screwstem
(*Bartonia virginica*)

The Ecology of Lydick Bog

Other Conservative Plant Species (too many to list!)

Latin Name	Common Name
<i>Liparis loeselii</i>	Green twayblade
<i>Lycopus rubellus</i>	Stalked water horehound
<i>Platanthera clavellata</i>	Club-spur orchid
<i>Salix pedicellaris</i> var. <i>hypoglauca</i>	Bog willow
<i>Salix sericea</i>	Silky willow
<i>Toxicodendron vernix</i>	Poison sumac
<i>Vaccinium macrocarpon</i>	Large cranberry
<i>Viola macloskeyi</i>	Smooth white violet



Club-spur orchid (*Platanthera clavellata*)



Poison sumac (*Toxicodendron vernix*)

The Ecology of Lydick Bog

Steeplebush (*Spiraea tomentosa* var. *rosea*)



Leatherleaf
(*Chamaedaphne calyculata* var. *angustifolia*)



Swamp loosestrife (*Decodon verticillatus*)



Three-way sedge (*Dulichium arundinaceum*)



The Ecology of Lydick Bog



Crested shield fern (*Dryopteris cristata*)



Marsh St. John's wort (*Triadenum virginicum*)

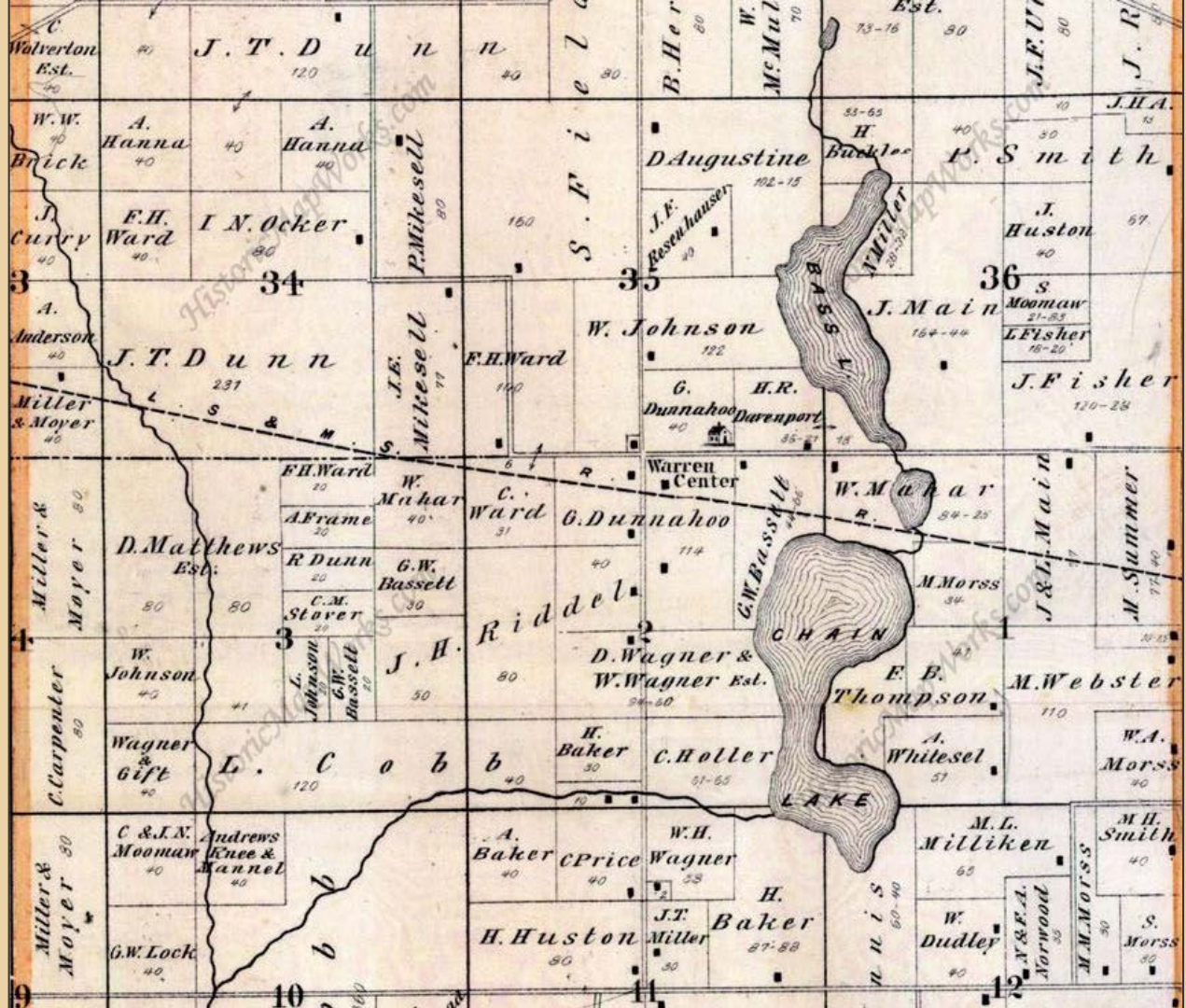


Large cranberry (*Vaccinium macrocarpon*)

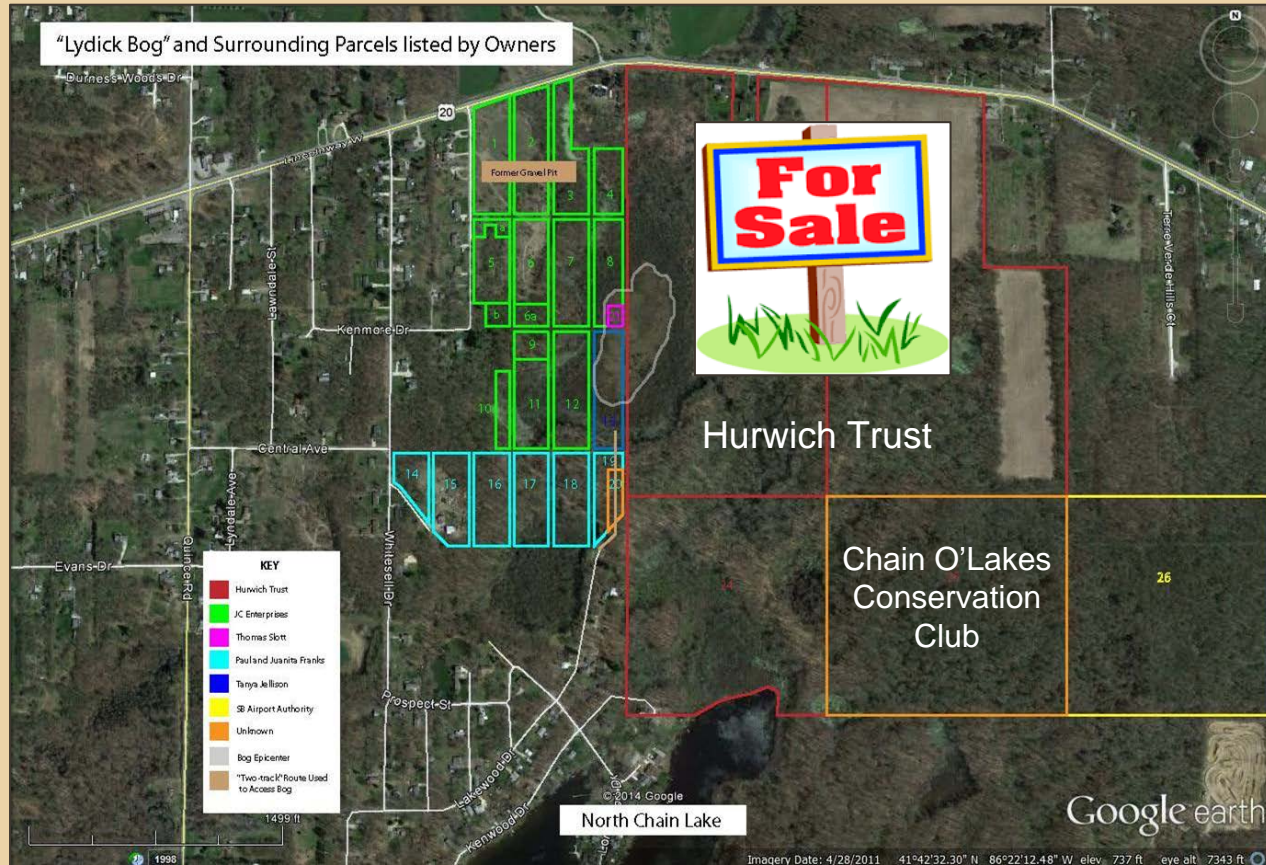


Tall swamp marigold (*Bidens trichosperma*)

Chain O'Lakes 1875



Lydick Bog After the Visit



Shirley Heinze Land Trust

9-15-2015



Land Acquisition Committee





South Bend
TRIBUNE News Obits Business Sports Entertainment

South Bend to pursue sale of Elbel

ERIN BLASKO South Bend Tribune eblasko@sbtinfo.com Dec 19, 2015 (2)



Santiago Flores

Pierre LaPham practices on the driving range at Elbel Golf Course in South Bend in this file photo. The Parks Board voted this week to sell the course subject to approval by the Common Council. SBT Photo/SANTIAGO FLORES



**Please Join us to Celebrate
the Preservation of Lydick Bog
in St. Joseph County**

Date: Friday, August 26, 2016

Time: 10:00am - 11:30am. (Eastern)
9:00am - 10:30am (Central)

Remarks: 10:15am

Hikes: 10:45am - 11:30am

Light Refreshments

Location: Lydick Bog

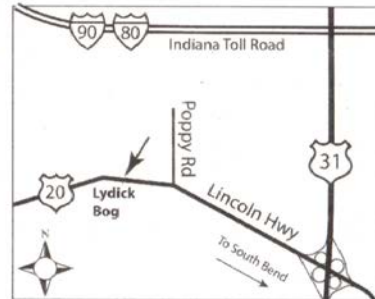
25600-25798 Lincoln Way West
South Bend, IN 46628

Directions:

From State Rd 31, take Lincoln Hwy west.

Entrance is on the left (south) side of the highway, just west of the Kenrose Motel, and about .35 mi. west of Poppy Rd.

Look for the event signs.







BICENTENNIAL *Nature*
TRUST

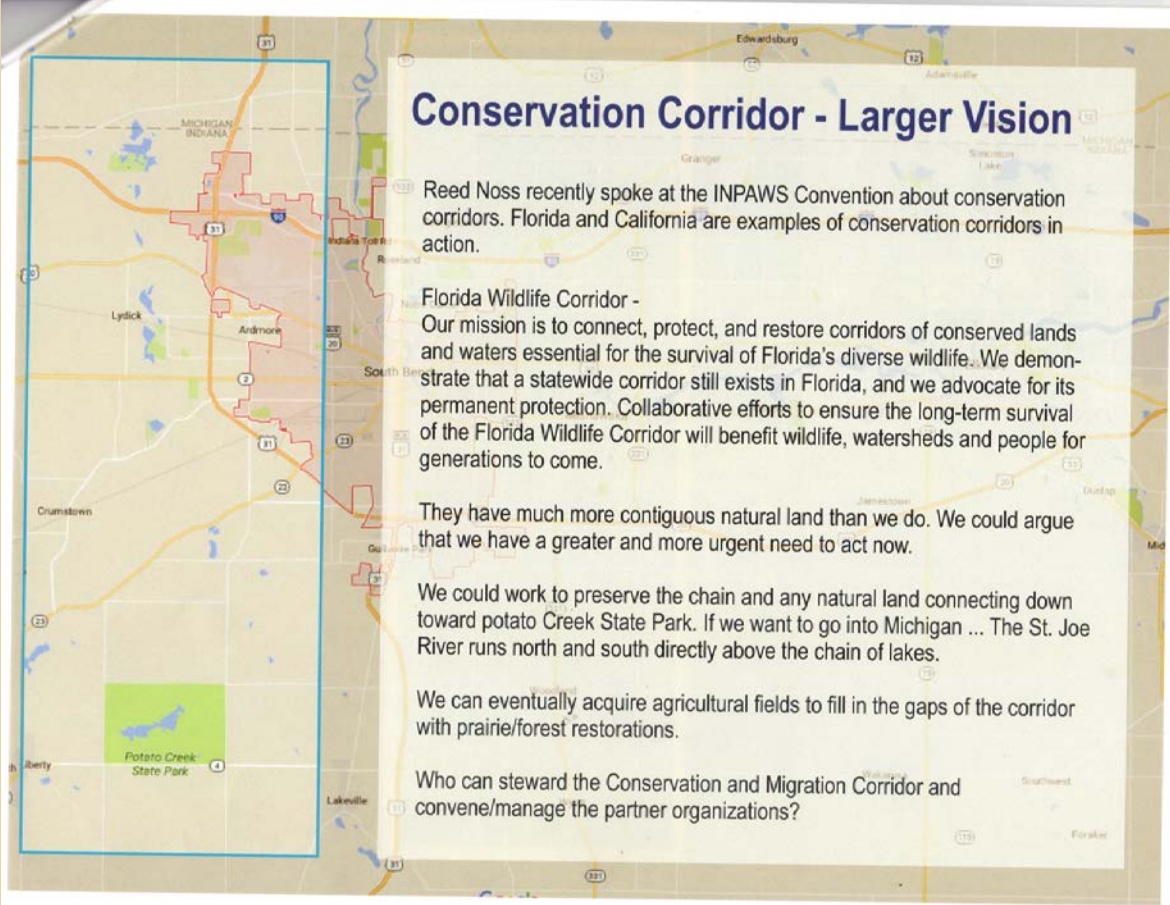




What's Next?



Moving Forward.....



Conservation Corridor - Larger Vision

Reed Noss recently spoke at the INPAWS Convention about conservation corridors. Florida and California are examples of conservation corridors in action.

Florida Wildlife Corridor -
Our mission is to connect, protect, and restore corridors of conserved lands and waters essential for the survival of Florida's diverse wildlife. We demonstrate that a statewide corridor still exists in Florida, and we advocate for its permanent protection. Collaborative efforts to ensure the long-term survival of the Florida Wildlife Corridor will benefit wildlife, watersheds and people for generations to come.

They have much more contiguous natural land than we do. We could argue that we have a greater and more urgent need to act now.

We could work to preserve the chain and any natural land connecting down toward potato Creek State Park. If we want to go into Michigan ... The St. Joe River runs north and south directly above the chain of lakes.

We can eventually acquire agricultural fields to fill in the gaps of the corridor with prairie/forest restorations.

Who can steward the Conservation and Migration Corridor and convene/manage the partner organizations?

A Conservation Alliance?



Conclusion

Incredibly unique area - ETR/TE species, coastal plain disjunct plant species,
conservative plant species

Large knowledge gaps... portions not surveyed recently, if ever

Much of the area already lost to development and invasive species

Small percentage is protected, have been recent developments to protect additional
natural areas, but a lot of work to do

Individuals can and did make a difference

More property needs to be acquired

For More Information:

Steve Sass



Indiana Native Plant
& Wildflower Society

north@inpaws.org

Scott Namestnik



snamestnik@orbisec.com

